

TPC test-4

Q1. A shopkeeper sells some articles at the profit of 25% on the original price. What is the exact amount of profit? To find the answer, which of the following information given in Statements I and II is/are necessary?

I. Sale price of the article

II. Number of article sold

- (a) Only I is necessary (b) Only II is necessary (c) Either I or II is necessary
(d) Both I and II are necessary (e) None of these

Q2. Six bells commence tolling together and toll at intervals of 2, 4, 6, 8 10 and 12 seconds respectively. In 60 minutes, how many times do they toll together ?

- (a) 4 (b) 10 (c) 15 (d) 31

Q3. Two stations A and B are 110 km apart on a straight line. One train starts from A at 7 a.m. and travels towards B at 20 kmph. Another train starts from B at 8 a.m. and travels towards A at a speed of 25 kmph. At what time will they meet?

- (a) 9 a.m. (b) 10 a.m. (c) 10.30 a.m. (d) 11 a.m.

Q4. Rama took a loan of Rs. 3600 with simple interest for as many years as the rate of interest. If she paid Rs. 1296 as interest at the end of the loan period, what was the rate of interest?

- (a) 3.6 (b) 6 (c) 18 (d) Cannot be determined (e) None of these

Q5. If the price of sugar is 90 rupees per kg and a person can buy 20 packets by spending all his money. If Price is increased $\frac{3}{8}$ then by how much percent must the person cut down his consumption so that his expenditure to keeping the expenditure same?

- (a) 37.5% (b) 40% (c) 27% (d) 30%

Q6. The mean of 50 observations was 36. It was found later that an observation 48 was wrongly taken as 23. The corrected new mean is :

- (a) 35 (b) 36.5 (c) 40 (d) 42

Q7. A train travelling at 48 kmph completely crosses another train having half its length and travelling in opposite direction at 42 kmph, in 12 seconds. It also passes a railway platform in 45 seconds. The length of the platform is

- (a) 400 m (b) 450 m (c) 560 m (d) 600 m

Q8. A hall is 15 m long and 12 m broad. If the sum of the areas of the floor and the ceiling is equal to the sum of the areas of four walls, the volume of the hall is:

- (a) 720 (b) 900 (c) 1200 (d) 1800

Q9. A sum fetched a total simple interest of Rs. 4016.25 at the rate of 9 p.c.p.a. in 5 years. What is the sum?

- (a) Rs. 4462.50 (b) Rs. 8032.50 (c) Rs. 8900 (d) Rs. 8925 (e) None of these

Q10. Akash reaches her center 10 minutes late if his speed from his house to the shopping complex is 40 km/hr. If he walks at a speed of 50 km/hr, then he reaches the shopping complex 5 minutes early. The distance of the shopping complex from her house is?

- (a) 15 (b) 20 (c) 30 (d) 50

Q11. A trader mixes 26 kg of rice at Rs. 20 per kg with 30 kg of rice of other variety at Rs. 36 per kg and sells the mixture at Rs. 30 per kg. His profit percent is:

- (a) No profit, no loss (b) 5% (c) 8% (d) 10% (e) None of these

Q12. In a certain school, 20% of students are below 8 years of age. The number of students above 8 years of age is $\frac{2}{3}$ of the number of students of 8 years of age which is 72. What is the total number of students in the school?

- (a) 72 (b) 80 (c) 120 (d) 130 (e) None of these

Q13. In an election between two candidates, one got 55% of the total valid votes, 20% of the votes were invalid. If the total number of votes was 7500, the number of valid votes that the other candidate got, was:

- (a) 2700 (b) 2900 (c) 3000 (d) 3100

Q14. The average weight of a class of 24 students is 35 kg. If the weight of the teacher be included, the average rises by 400 g. The weight of the teacher is :

- (a) 45 kg (b) 46 kg (c) 47 kg (d) 48 kg

Q15. A right triangle with sides 3 cm, 4 cm and 5 cm is rotated the side of 3 cm to form a cone. The volume of the cone so formed is:

- (a) $12\pi \text{ cm}^3$ (b) $15\pi \text{ cm}^3$ (c) $16\pi \text{ cm}^3$ (d) $20\pi \text{ cm}^3$

Q16. The product of two numbers is 4107. If the H.C.F. of these numbers is 37, then the greater number is:

- (a) 101 (b) 107 (c) 111 (d) 185

Q17. The price of 2 sarees and 4 shirts is Rs. 1600. With the same money one can buy 1 saree and 6 shirts. If one wants to buy 12 shirts, how much shall he have to pay ?

- (a) Rs. 1200 (b) Rs. 2400 (c) Rs. 4800 (d) Cannot be determined (e) None of these

Q18. Running at the same constant rate, 6 identical machines can produce a total of 270 bottles per minute. At this rate, how many bottles could 10 such machines produce in 4 minutes?

- (a) 648 (b) 1800 (c) 2700 (d) 10800

Q19. Tea worth Rs. 126 per kg and Rs. 135 per kg are mixed with a third variety in the ratio 1 : 1 : 2. If the mixture is worth Rs. 153 per kg, the price of the third variety per kg will be:

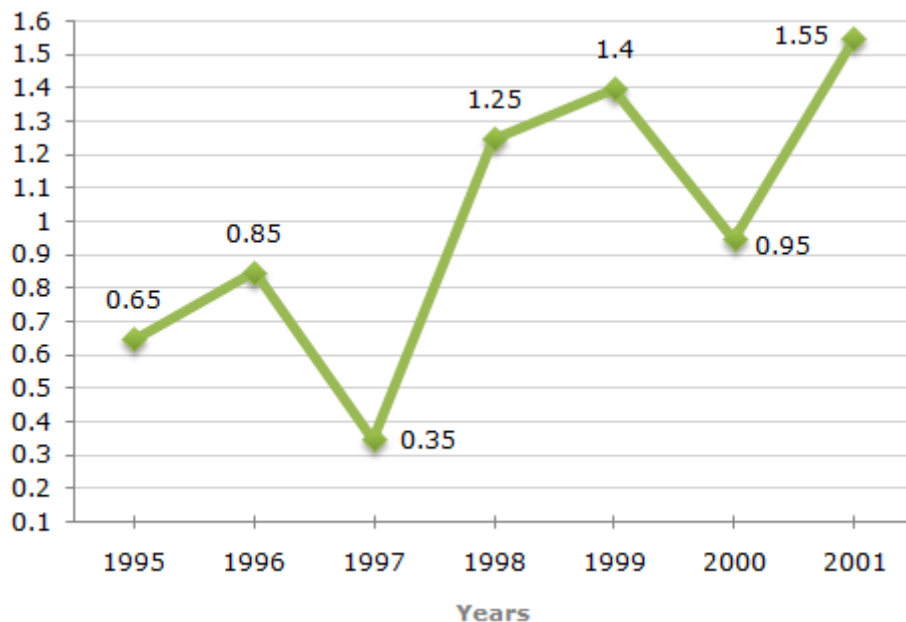
- (a) Rs. 169.50 (b) Rs. 170 (c) Rs. 175.50 (d) Rs. 180

Q20. Seats for Physics, Chemistry and English in a school are in the ratio 4 : 5 : 8. There is a proposal to increase these seats by 20%, 50% and 80% respectively. What will be the ratio of increased seats?

- (a) 2 : 3 : 4 (b) 6 : 7 : 8 (c) 6 : 8 : 9 (d) None of these

Directions (21-25): The following line graph gives the ratio of the amounts of imports by a company to the amount of exports from that company over the period from 1995 to 2001.

Ratio of Value of Imports to Exports by a Company Over the Years.



Q21. If the imports in 1998 was Rs. 250 crores and the total exports in the years 1998 and 1999 together was Rs. 500 crores, then the imports in 1999 was ?

- (a) Rs. 250 crores (b) Rs. 300 crores (c) Rs. 357 crores (d) Rs. 420 crores

Q22. The imports were minimum proportionate to the exports of the company in the year ?

- (a) 1995 (b) 1996 (c) 1997 (d) 2000

Q23. What was the percentage increase in imports from 1997 to 1998?

- (a) 72 (b) 56 (c) 28 (d) Data inadequate

Q24. If the imports of the company in 1996 was Rs. 272 crores, the exports from the company in 1996 was?

- (a) Rs. 370 crores (b) Rs. 320 crores (c) Rs. 280 crores (d) Rs. 275 crores

Q25. In how many of the given years were the exports more than the imports ?

- (a) 1 (b) 2 (c) 3 (d) 4

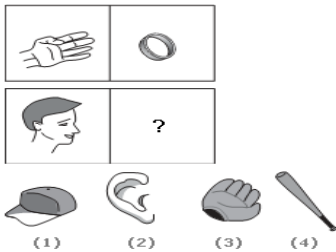
Q26. Look at this series: V, VIII, XI, XIV, __, XX, ... What number should fill the blank?

- (a) IX (b) XXIII (c) XV (d) XVII

Q27. Which word does NOT belong with the others?

- (a) parsley (b) basil (c) dill (d) mayonnaise

Q28. Choose the picture that would go in the empty box so that the two bottom pictures are related in the same way as the top two are related.



- (a) 1 (b) 2 (c) 3 (d) 4

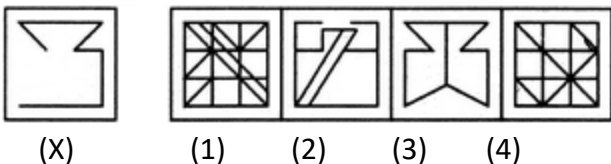
Q29. Choose the alternative which is closely resembles the mirror image of the given combination.

UTZFY6KH

- (1) HK9YJΣΣ10 (2) 01Σ7Λ9KH
(3) HK0ΛEΣΣ10 (4) HX0Y7ΣTU

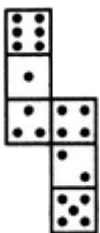
- (a) 1 (b) 2 (c) 3 (d) 4

Q30. Find out the alternative figure which contains figure (X) as its part.



- (a) 1 (b) 2 (c) 3 (d) 4

Q31. How many dots lie opposite to the face having three dots, when the given figure is folded to form a cube?



- (a) 2 (b) 4 (c) 5 (d) 6

Q32. Choose the alternative which is closely resembles the water-image of the given combination.

GR98AP76ES

- (1) GK68V619E2 (2) GR08V619E2
 (3) GK08V619E2 (4) GK08A619ES

- (a) 1 (b) 2 (c) 3 (d) 4

Q33. Arrange the words given below in a meaningful sequence.

1. Tree	2. Seed	3. Flowers
4. Fruit	5. Plant	

- (a) 5, 2, 1, 3, 4 (b) 2, 5, 1, 4, 3 (c) 2, 5, 1, 3, 4 (d) 2, 5, 3, 1, 4

Q34. In the following questions there are three statements. Which are followed by three or four conclusions. Choose the conclusions which logically follow from the given statements.

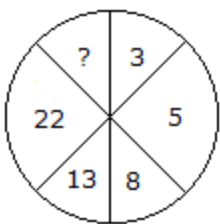
Statements: All the locks are keys. All the keys are bats. Some watches are bats.

Conclusions:

1. Some bats are locks.
2. Some watches are keys.
3. All the keys are locks.

- (a) Only (1) and (2) (b) Only (1) (c) Only (2) (d) Only (1) and (3)

Q35. Which one will replace the question mark?



- (a) 45 (b) 29 (c) 39 (d) 37

Q36. A number of friends decided to go on a picnic and planned to spend Rs. 96 on eatables. Four of them, however, did not turn up. As a consequence, the remaining ones had to contribute Rs. 4 each extra. The number of those who attended the picnic was

- (a) 8 (b) 12 (c) 16 (d) 24

Q37. Choose the word which is different from the rest.

(a) Hangar (b) Platform (c) Dock (d) Park (e) Bus stand

Q38. Amit said - "This girl is the wife of the grandson of my mother". How is Amit related to the girl?

(a) Brother (b) Grandfather (c) Husband (d) Father-in-law

Q39. A, B, C, D and E are sitting on a bench. A is sitting next to B, C is sitting next to D, D is not sitting with E who is on the left end of the bench. C is on the second position from the right. A is to the right of B and E. A and C are sitting together. In which position A is sitting ?

(a) Between B and D (b) Between B and C (c) Between E and D (d) Between C and E

Q40. At what time between 5 and 6 o' clock are the hands of a 3 minutes apart?

(a) 24 min (b) 12 min (c) 13 min (d) 14 min

Answer keys

1	D	9	D	17	B	25	D	33	C
2	D	10	D	18	B	26	D	34	B
3	B	11	B	19	C	27	D	35	C
4	B	12	E	20	D	28	A	36	A
5	C	13	A	21	D	29	D	37	E
6	B	14	A	22	C	30	A	38	D
7	A	15	A	23	D	31	D	39	B
8	C	16	C	24	B	32	C	40	A

r

www.tpcglobal.in