

TPC test-20

- Q1. The average weight of 8 persons increases by 3.5 kg when a new person comes in place of one of them weighing 72 kg. What might be the weight of the new person?
- (a) 70 kg (b) 75 kg (c) 100 kg (d) 85 kg
- Q2. If the cost price is 70% of selling price. Then what is the profit percent.
- (a) 30% (b) 40% (c) $42\frac{6}{7}\%$ (d) None of these
- Q3. If $x = 3$ and $y = 4$, $(x + y)/4$, $(2x + 1)/3$, $(3x + 5y)/4$ and $(5x + 3y)/5$, then which is the largest fraction?
- (a) $(x + y)/4$ (b) $(2x + 1)/3$ (c) $(3x + 5y)/4$ (d) $(5x + 3y)/5$
- Q4. A student scored 40% in an exam and failed by 12 marks, if he get 55% it would he 36 marks more than the passing marks. Find the passing marks?
- (a) 140 (b) 320 (c) Data inadequate (d) None of these
- Q5. A man spends 20% of his income on food, 25% on children's education and 80% of the remaining on house rent. What percent of his income he is left with?
- (a) 6% (b) 8% (c) 9% (d) 11%
- Q6. Time taken by A to finish a piece of work is twice the time taken B and thrice the time taken by C. If all three of them work together, it takes them 2 days to complete the entire work. In how much time work was done by B alone?
- (a) 2 days (b) 6 days (c) 3 days (d) 5 days (e) Cannot be determined
- Q7. A fruit seller sells 45% of the oranges that he has along with one more orange to a customer. He then sells 20% of the remaining oranges and 2 more oranges to a second customer. He then sells 90% of the now remaining oranges to a third customer and is still left with 5 oranges. How many oranges did the fruit seller have initially?
- (a) 121 (b) 111 (c) 100 (d) 120
- Q8. In a library, the ratio of number of fictional books to that of non-fictional books was 4:3 and total number of fictional books was 2499. When some more fictional books were bought, the ratio became 5:3. Find the number of fiction books bought.
- (a) 312 (b) 321 (c) 623 (d) None of these
- Q9. A and B started a business by investing Rs. 22,500 and Rs. 90,000 respectively. Out of a total profit of Rs. 180,00, B's share is :
- (a) Rs. 16,800 (b) Rs. 19,200 (c) Rs. 14,500 (d) Rs. 14,400

Q10. If a boat goes a certain distance at 40 km/hr and comes back the same distance at 50 km/hr. What is the average speed (in km/hr) for the total journey?

- (a) 12 (b) 24 (c) 26 (d) None of these

Q11. The difference between the simple interest between the simple interest received from two different sources on ₹ 1500 for 3 years is ₹ 13.50. The difference between their rate of interest is -

- (a) 0.1 % (b) 0.2 % (c) 0.3 % (d) 0.4 %

Q12. A, B and C can do a piece of work in 20, 30 and 60 days respectively. In how many days can A do the work if he is assisted by B and C on every third day?

- (a) 12 days (b) 15 days (c) 16 days (d) 18 days

Q13. A team of 8 persons joins in a shooting competition. The best marksman scored 85 points. If he had scored 92 points, the average score for the team would have been 84. The number of points, the team scored was :

- (a) 665 (b) 657 (c) 658 (d) 678

Q14. By selling 50 lemons for Rs 20, a man loses 20%. How many should he sell for Rs 24 to gain 20% in the transaction?

- (a) 16 (b) 18 (c) 20 (d) 40

Q15. A purse contains one-rupee, 50 paise and 25 paise coins in the ratio 4:3:6. If the total amount in the purse is Rs 28, then find the number of 50 paise coins present in the purse.

- (a) 6 (b) 12 (c) 4 (d) 8

Q16. On dividing a number by 357, we get 39 as remainder. On dividing the same number by 17, what will be the remainder?

- (a) 0 (b) 3 (c) 5 (d) 11

Q17. A does 80% of a work in 20 days. He then calls in B and they together finish the remaining work in 3 days. How long B alone would take to do the whole work?

- (a) 23 days (b) 37 days (c) 37.5 days (d) 40 days

Q18. A sum becomes 27 times in 3 years, compounded annually at a certain rate of interest. Calculate annual interest rate.

- (a) 150% (b) 100% (c) 300% (d) 200%

Q19. Train A takes 10 seconds to cross a pole and 20 seconds to cross a platform of 200 m. Train B which moves in the opposite direction to train A is moving at speed of 54 kmph. Calculate relative speed

- (a) 126 kmph (b) 108 kmph (c) 90 kmph (d) None of the above

Q20. The product of two prime numbers is 117. Their LCM should be:

- (a) 1 (b) 117 (c) equal to their HCF (d) Can not be calculated

Q21. In a box, there are 8 red, 7 blue and 6 green balls. One ball is picked up randomly what is the probability that its neither a red nor green?

- (a) 1/3 (b) 3/4 (c) 7/19 (d) 8/21 (e) 9/21

Direction for Q22: In each of the following questions two statements are given. Which are followed by four conclusions (1), (2), (3) and (4). Choose the conclusions which logically follow from the given statements.

Q22. Some tables are T.V. Some T.V. are radios.

Conclusions:

1. Some tables are radios.
2. Some radios are tables.
3. All the radios are T.V.
4. All the T.V. are tables.

- (b) Only (2) and (4) (b) Only (1) and (3) (c) Only (4)
(d) Only (1) and (4) (e) None of the four.

Q23. Arrange the words given below in a meaningful sequence.

1. Leaves	2. Branch	3. Flower
4. Tree	5. Fruit	

- (a) 4, 3, 1, 2, 5 (b) 4, 2, 5, 1, 3 (c) 4, 3, 2, 1, 5 (d) 4, 2, 1, 3, 5

Q24. One morning Udai and Vishal were talking to each other face to face at a crossing. If Vishal's shadow was exactly to the left of Udai, which direction was Udai facing?

- (a) East (b) West (c) North (d) South

Q25. Some boys are sitting in three rows all facing North such that A is in the middle row. P is just to the right of A but in the same row. Q is just behind of P while R is in the North of A. In which direction of R is Q?

- (a) South (b) South-West (c) North-East (d) South-East

Q26. Five bells begin to toll together and toll respectively at intervals of 6, 5, 7, 10 and 12 seconds. How many times will they toll together in one hour excluding the one at the start ?

- (a) 7 times (b) 8 times (c) 9 times (d) 11 times

Q27. Which one will replace the question mark ?

7	4	5
8	7	6
3	3	?
29	19	31

- (a) 3 (b) 5 (c) 4 (d) 6

Q 28. Choose the alternative which is closely resembles the mirror image of the given combination.

BR4AQ16HI

- (1) | H 6 1 Q A 1 R B (2) | H 6 1 Q A 1 R B
(3) | H 6 1 Q A 1 R B (4) | H 6 1 Q A 1 R B

- (a) 1 (b) 2 (c) 3 (d) 4

Q29. Each problem consists of three statements. Based on the first two statements, the third statement may be true, false, or uncertain.

Class A has a higher enrollment than Class B.

Class C has a lower enrollment than Class B.

Class A has a lower enrollment than Class C.

If the first two statements are true, the third statement is

- (a) true (b) false (c) uncertain

Q30. In a certain code language,

'134' means 'good and tasty';

'478' means 'see good pictures' and

'729' means 'pictures are faint'.

Which of the following digits stands for 'see'?

- (a) 9 (b) 2 (c) 1 (d) 8

Q31. Given a Series -10, -8, 6, 40, 102, ?

Find what number would come in place of the question mark(?).

- (a) 105 (b) 117 (c) 200 (d) 129

Q32. In a family, there are six members A, B, C, D, E and F. A and B are a married couple, A being the male member. D is the only son of C, who is the brother of A. E is the sister of D. B is the daughter-in-law of F, whose husband has died. How is E related to C?

(a) Sister (b) Daughter (c) Cousin (d) Mother

Q33. The calendar for the year 2007 will be the same for the year:

(a) 2014 (b) 2016 (c) 2017 (d) 2018

Q34. At 3:40, the hour hand and the minute hand of a clock form an angle of:

(a) 120° (b) 125° (c) 130° (d) 135°

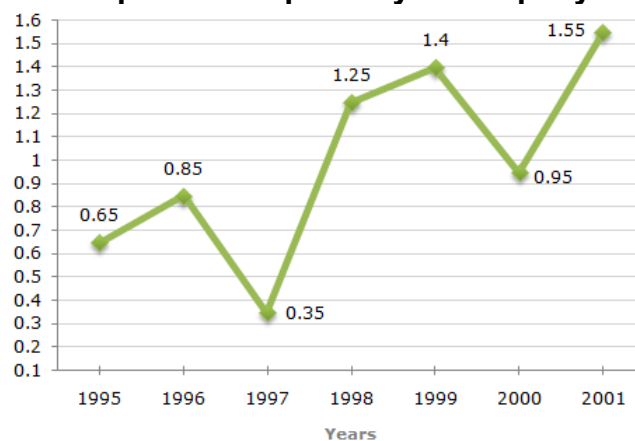
Q35. In each word of the following question consists of pair of words bearing a relationship among these, from amongst the alternatives, pick up the pair that best illustrate a similar relationship.

- Letter : Word

(a) Page : Book (b) Product : Factory (c) Club : People (d) Home work : School

Direction for questions 36-40: The following line graph gives the ratio of the amounts of imports by a company to the amount of exports from that company over the period from 1995 to 2001.

Ratio of Value of Imports to Exports by a Company Over the Years.



Q36. If the imports in 1998 was Rs. 250 crores and the total exports in the years 1998 and 1999 together was Rs. 500 crores, then the imports in 1999 was?

(a) Rs. 250 crores (b) Rs. 300 crores (c) Rs. 357 crores (d) Rs. 420 crores

Q37. The imports were minimum proportionate to the exports of the company in the year?

(a) 1995 (b) 1996 (c) 1997 (d) 2000

Q38. What was the percentage increase in imports from 1997 to 1998?

(a) 72 (b) 56 (c) 28 (d) Data inadequate

Q39. If the imports of the company in 1996 was Rs. 272 crores, the exports from the company in 1996 was ?

(a) Rs. 370 crores (b) Rs. 320 crores (c) Rs. 280 crores (d) Rs. 275 crores

Q40. In how many of the given years were the exports more than the imports?

(a) 1 (b) 2 (c) 3 (d) 4

Answer key

1	C	9	D	17	C	25	D	33	D
2	C	10	D	18	D	26	B	34	C
3	C	11	C	19	A	27	B	35	A
4	A	12	B	20	B	28	A	36	D
5	D	13	A	21	A	29	B	37	C
6	B	14	D	22	E	30	D	38	D
7	D	15	B	23	D	31	C	39	B
8	D	16	C	24	C	32	B	40	D